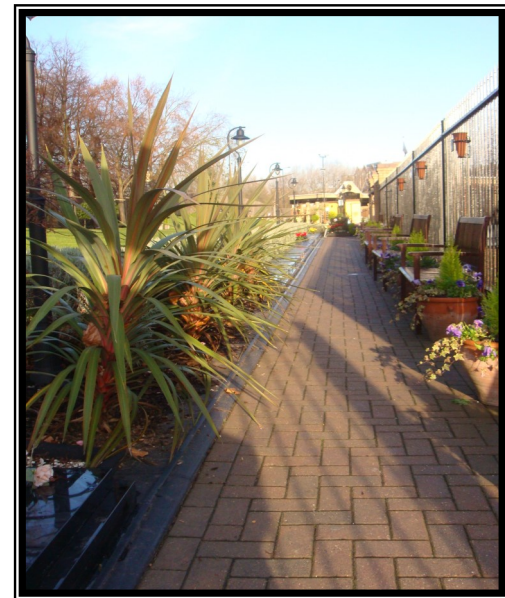


# *The Albin Memorial Garden*



2019



## Wall Plaque

A 15cm x 10cm black polished granite plaque with cut and gilded words and lettering. Wall plaques are located on the North Wall of the garden.

## Sundry other

Loose scattering of ashes	East Lawn
Rose garden scattering and plaque	5 years
Re-opening charge	
Additional plaque (incl inscription)	10cm x 15cm 15cm x 20cm
Photoplaque	single double
Small lantern plaque	
Replacement columbarium cover	
Replacement vase (incl metal)	
Service Charge	No witness Witness
Stone Birdbath	Supply only
Stone Sundial (see below)	Supply only
Stone Planter (see below)	Supply only



## Albin Memorial Garden Rules and Guidelines

- The garden is dedicated to the dead and your thoughtful respect would be appreciated by all that use the garden
- Opening hours are available from the garden office. The Albin Memorial Garden management reserves the right to change the hours of opening.
- An adult must accompany children under the age of 14 at all times unless with prior consent.
- A reasonable dress code must be observed, tops must be worn at all times.
- We reserve the right to move flowers left in any part of the garden, should it become necessary.
- Christmas wreaths should be placed on the railing only (The metals and dyes used in their construction can cause damage to stonework and we will move any wreaths placed on niches to the railings).
- Only vases provided by or approved by the Albin Memorial Garden are permitted in the garden (no pots are allowed).
- Any objects left in the garden (cards, images, religious artefacts, etc.) will be removed on a weekly basis, and will be kept in the office for collection. Any objects not collected after one month will be recycled.
- Removal of urns, plaques and memorials is prohibited unless completed by the Albin Memorial Garden
- No pets or dogs, with the exception of guide dogs, except by prior consent.
- No radios or music are to be played in the garden except by prior consent, please respect the tranquillity of the garden at all times.
- No walking on beds, lawns or memorials, no climbing of the walls or fountain.
- No litter.
- No private scattering ashes.
- No playing of ball games.
- No drinking, eating or smoking in the garden unless with prior consent.
- No lighting of fires unless with prior consent.
- No bicycles, skateboards, roller blades or roller boots in the garden.
- The Albin Memorial Garden management reserves the right to arbitrate in any matter.
- The Albin Memorial Garden cannot accept responsibility for acts of vandalism in the garden although we will take precautions to prevent vandalism.
- The Albin Memorial Garden reserves the right to amend the rules, which will be published in the Memorial Garden Office.
- Please respect that the garden is open to all, regardless of creed.
- Maintenance of the garden is the responsibility of the Albin Memorial Garden. No maintenance or repair should be undertaken without consent.
- The Albin Memorial Garden reserve the right to refuse anyone entry to the garden.
- The entrance to the park does not represent a throughway into Southwark Park.
- The Albin Memorial Garden management reserve the right to terminate any agreement if the rules of the garden are not observed.
- The Albin Memorial Garden management reserve the right to refuse any inscription.
- The Albin memorial Garden cannot accept responsibility for deterioration caused by natural elements
- Replacement of sold garden parts, whether lost, stolen or damaged will be charged for.
- Brushes, brooms, bins, dust pans are provided by Albins. Any help to keep the Garden tidy will always be appreciated.



## *Pier Dedication*

**A chance to dedicate a whole pier on the North Wall to your loved one or family. Price includes initial 30cm x 30cm plaque. Further plaques, vases and lanterns can be added to your pier.**



## *Floral Vase Plaque*

A wall mounted terracotta vase with a 10cm x 10cm black polished granite plaque with cut and gilded words and lettering. Flower vases are located around the garden and predominantly on the floral wall.



## *Granite Niche*

Replace the entire niche stone with a granite cover, including inscription in gilded lettering.





## *Water Garden*

Polished granite kerbs surrounding the beautiful water garden provide a tranquil place for ashes to rest. Interment for two/four ashes casket tubes, includes granite book/heart and inscription.



## *Lantern Plaque*

A wall mounted bronzed lantern mounted on a 20cm x 15cm black polished granite plaque with cut and gilded words and lettering. Lantern plaques are located on the North Wall, close to the Elizabeth Dare Sanctuary.



## *Boulder Plaque*

A 15cm x 10cm polished granite plaque with cut and gilded words and lettering mounted on a rough hewn boulder of reconstituted stone. Boulders are located around the ashebarium.



## *Granite headstone*

A headstone can be added to the granite kerb to create a striking memorial. Price is for headstone only and does not include the kerb memorial (see previous page).



## *Large Granite Kerbs*

The polished granite kerbs at the entrance to the garden and along the park edge provide a place for interment of ashes caskets. (Prices include a granite book/heart and basic inscription)



## *Fountain Boulder*

A 15cm x 10cm polished granite plaque with cut and gilded words and lettering mounted on a rough hewn boulder. These boulders make up the base of the fountain which is the centrepiece of the formal gardens.





## Small Granite Kerbs

*These polished granite kerbs adjacent to the park edge provide a place for the interment of two ashes caskets. Prices include a book/heart and basic inscription.*



## Water Garden

Based around a small water feature containing a number of colourful koi carp and other fish, the water garden provides a tranquil spot to sit and remember those we loved.





## *Columbarium*

The Columbarium within the sanctuary allows the interment of six to eight ashes caskets behind a heavy polished granite slab with inscription in gold leaf.



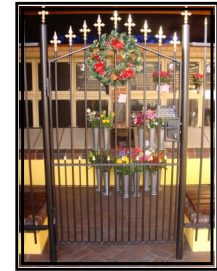
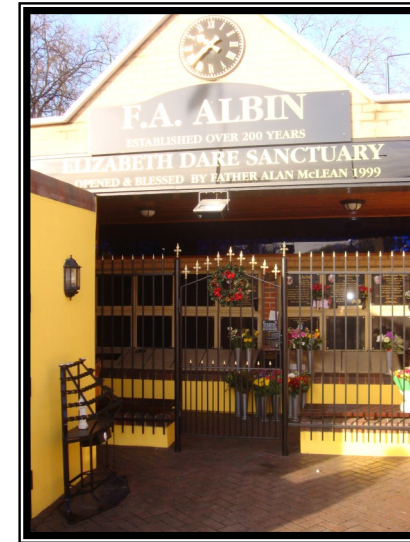
## *Niche*

A ground niche for the interment of ashes caskets. The niches are available for a single interment or for families of up to four and include a black granite plaque cover (whole niches only) with cut and gilded words and lettering. Should the wording require amendment following the first interment an additional cost will be made at the appropriate time.



## Ashebarium

An underground “crypt” for the storage of ashes caskets. The price below is for interment in the ashebarium only, a plaque can be affixed to the outer wall (see sundries price list).



## Sanctuary Niche

The Elizabeth Dare Sanctuary is the premier location in the garden and clients will receive two keys allowing them private access to the gated sanctuary. Niches are available for interment of four to six ashes caskets.